

ZINKRAL

ZAMA

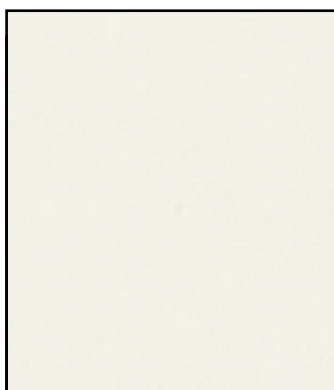
VERNICIATURA

PAINTING



Bianco avorio (abbinato 62I)
Ivory white (combined 62I)

• 62Q



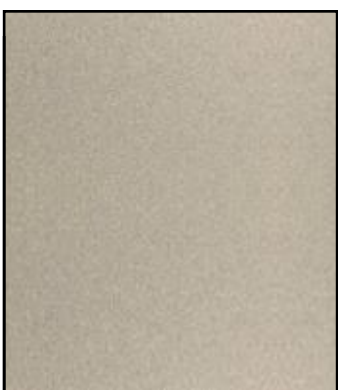
Bianco crema (abbinato 62L)
Creamy white (combined 62L)

• 62A4



Alluminio naturale opaco
Natural matt aluminium

• 25A



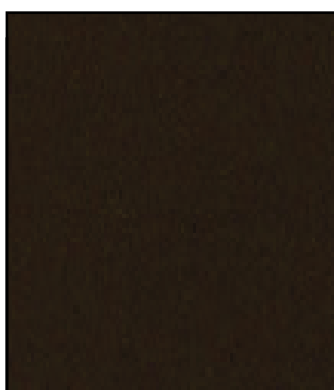
Effetto inox
Stainless steel effect

• 270



Piombo
Lead-grey

• 60P



Moka

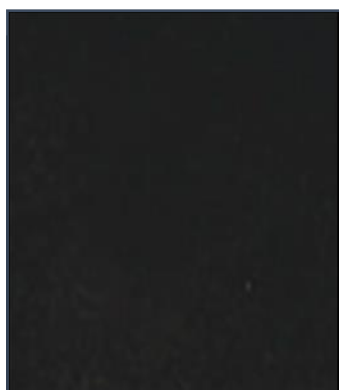
• 780

ZINKRAL

ZAMA

VERNICIATURA

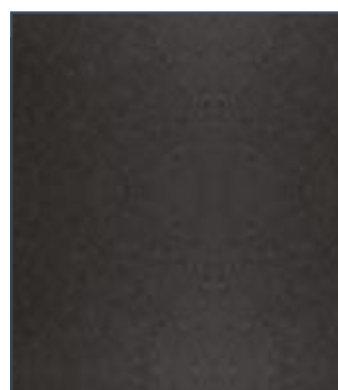
PAINTING



Nero opaco
Matt black
• 20M



Moka new
Moka new
• 78I



Ghisa
• 660



Titanio
Titanium
• 48V



Titanio
Titanium
• 88T

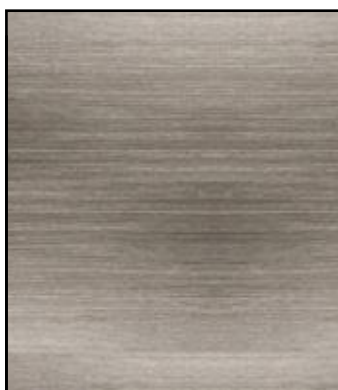


Bronzo
Bronze
• 86B

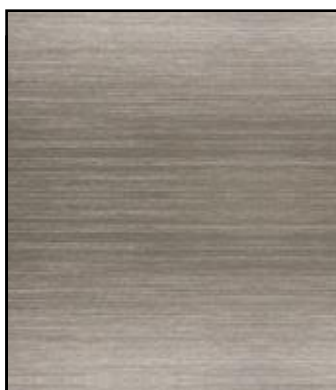
ZINKRAL

ZAMA

FINITURE GALVANICHE
GALVANIC FINISHES



Nichel satinato semilucido
Semi-gloss satin nickel
• 16S



Nichel satinato lucido
Glossy satin nickel
• 160



Cromo Lucido
Bright chrome
• 260



Argento lucido
Bright silver
• 140



Argento semilucido
Semi-gloss silver
• 44S



Bronzo spazzolato
Brushed bronze
• 08B

ZINKRAL

ZAMA

FINITURE GALVANICHE
GALVANIC FINISHES



Rame spazzolato
Brushed copper
• 52B



Canna di fucile spazzolato
Brushed Gunmetal
• 50S



Nichel vecchio
Antique nickel
• 50V



Bronzo chiaro
Light bronze
• 08C



Bronzo scuro
Dark bronze
• 080

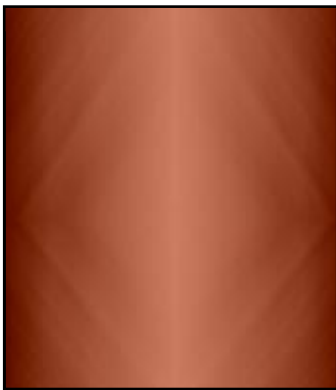


Nichel nero
Black nickel
• 50

ZINKRAL

ZAMA

FINITURE GALVANICHE
GALVANIC FINISHES



Rame lucido
Glossy copper
• 520



Ottone satinato
Brushed brass
• 06A

ALUMINIUM

ALLUMINIO

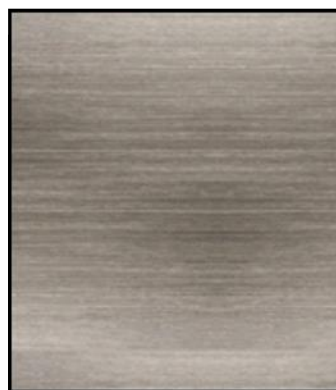
FINITURE GALVANICHE GALVANIC FINISHES



Cromo Lucido
Bright chrome
• 260



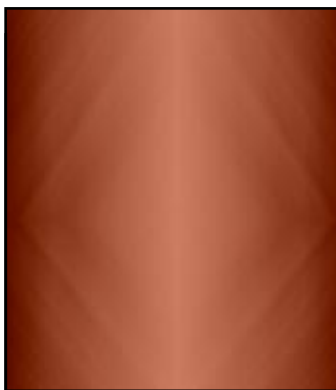
Canna di fucile spazzolato
Brushed Gunmetal
• 50S



Nichel satinato semilucido
Semi-gloss satin nickel
• 16S



Nichel satinato lucido
Glossy satin nickel
• 160

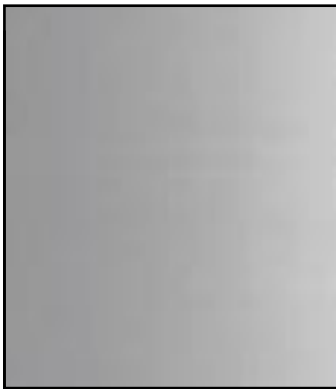


Rame lucido
Glossy copper
• 520

ALUMINIUM

ALLUMINIO

FINITURE ANODIZZATE ANODIZED FINISHES



Alluminio naturale
Natural aluminium

• 330



Inox satinato opaco
Matt satin stainless steel

• 37D



Inox satinato brillante
Bright satin stainless steel

• 37S



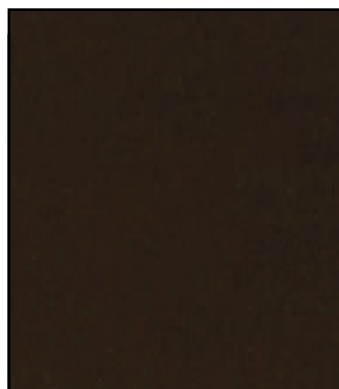
Alluminio brillante
Bright aluminium

• 380



Alluminio brillante
spazzolato
Bright brushed aluminium

• 38D



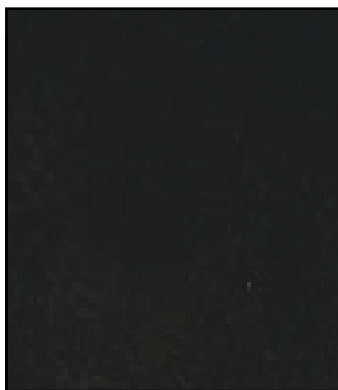
Moka

• 470

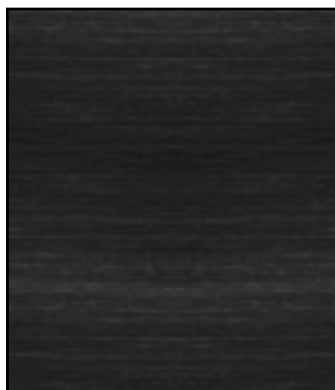
ALUMINIUM

ALLUMINIO

FINITURE ANODIZZATE
ANODIZED FINISHES



Nero opaco
Matt black
• 20B



Nero opaco spazzolato
Brushed matt black
• 20C



Titanio
Titanium
• 480



Canna di fucile spazzolato
Brushed gunmetal
• 20F



Bronzo scuro
Dark bronze
• 880



Oro satinato
Brushed gold
• 05A

ALUMINIUM

ALLUMINIO

VERNICIATURA

PAINTING



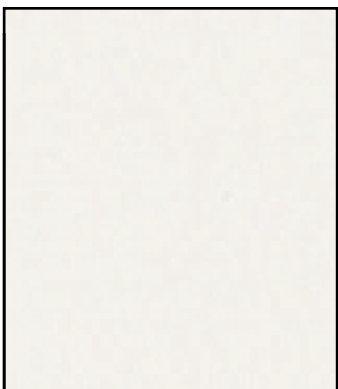
Bianco ghiaccio
Ice white
• 62A3



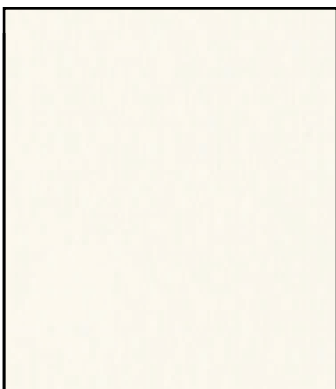
Bianco gesso
Chalk white
• 62A2



Bianco papiro
Papyrus white
• 620



Bianco crema (abbinato
62A4)
Creamy white (combined
62A4)
• 62L



Bianco avorio (abbinato
62Q)
Ivory white (combined
62Q)
• 62I



Piombo
Lead-grey
• 60E

ZINKRAL / ALUMINIUM

ZAMA / ALLUMINIO

PVD



Oro

Gold

• 07PVD